

Projector Lift

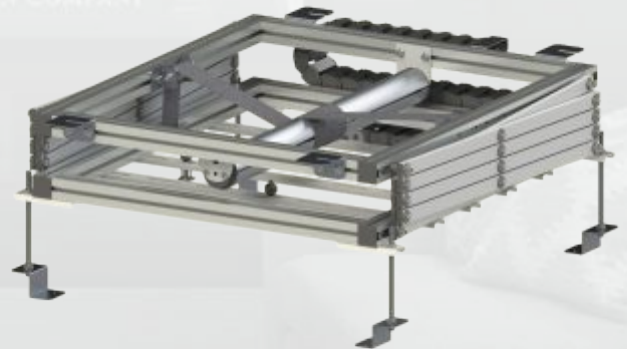
1 Meter Drop

Model No.

AX201

Product Details

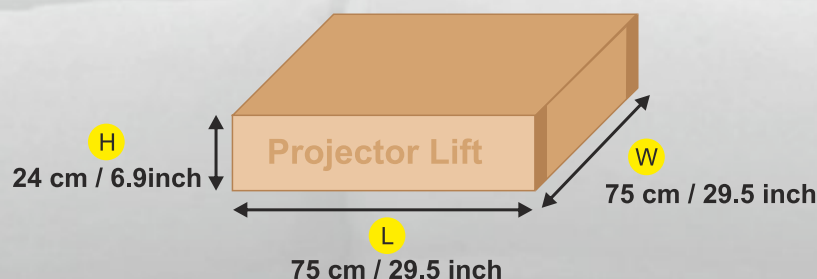
- Aluminum Scissor Lift
- 1 Meter Drop
- Tubular Motor
- 18 kg Weight Lifting Capacity with Bottom Sheet
- Cable Track For Better Cable Management
- Adjustable Clamps For Lower Plate



1 YEAR
WARRANTY

Lift Box Dimension

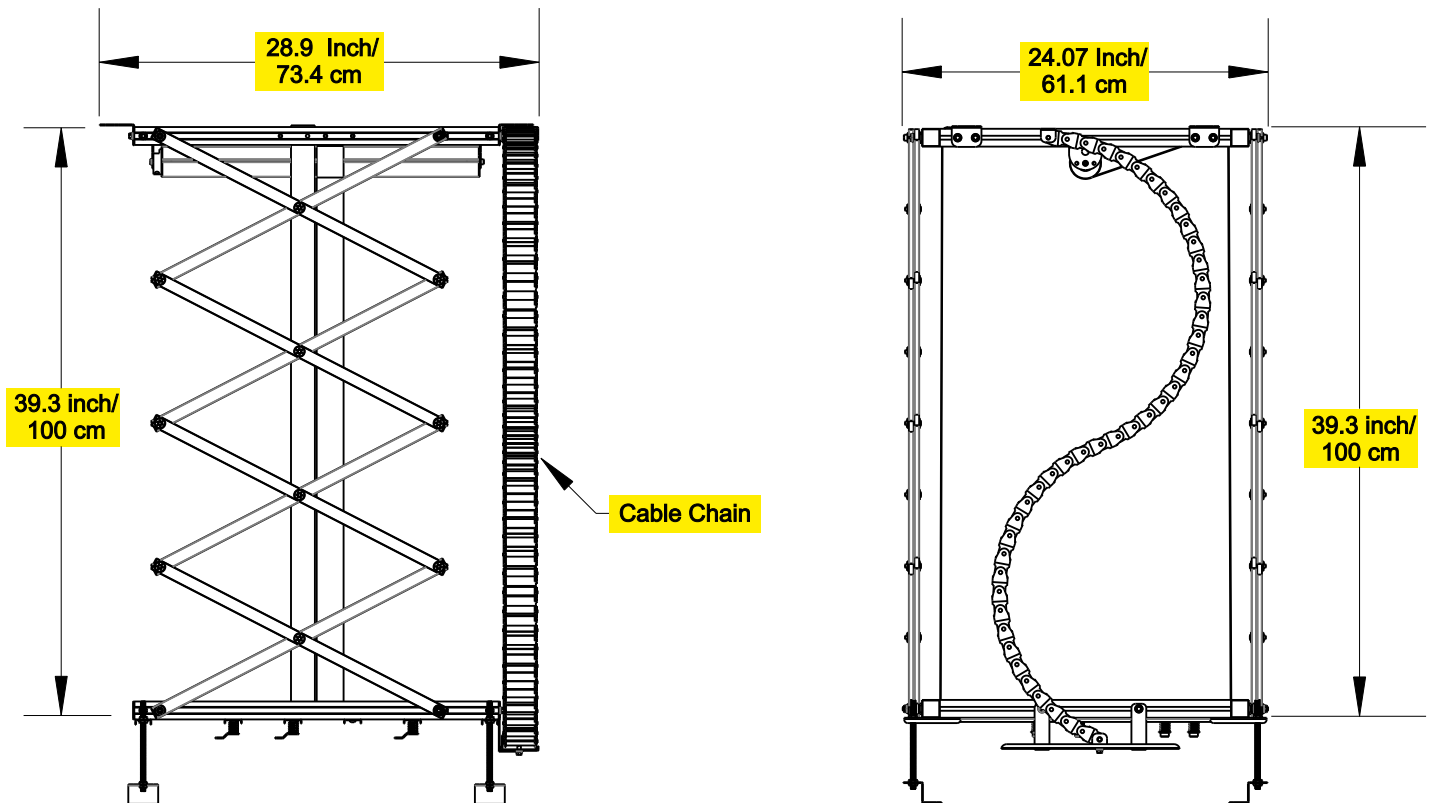
Weight 16kg



Projector Lift

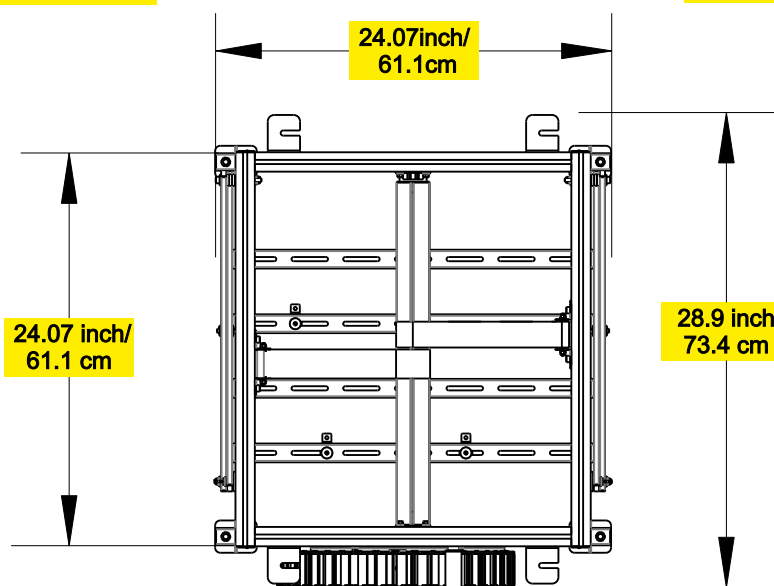
1 Meter Drop

Model No. AX201



SIDE VIEW

BACK VIEW



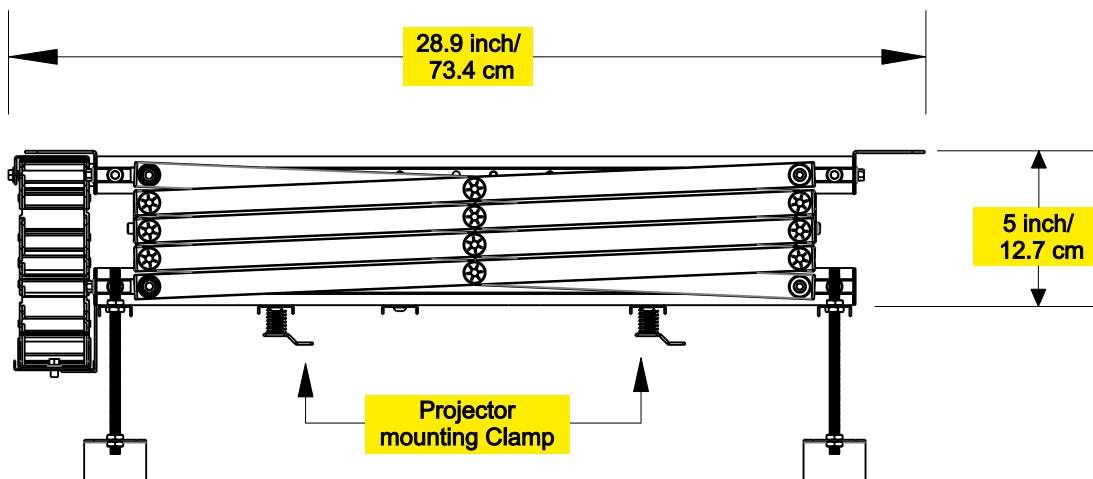
TOP VIEW

Projector Lift

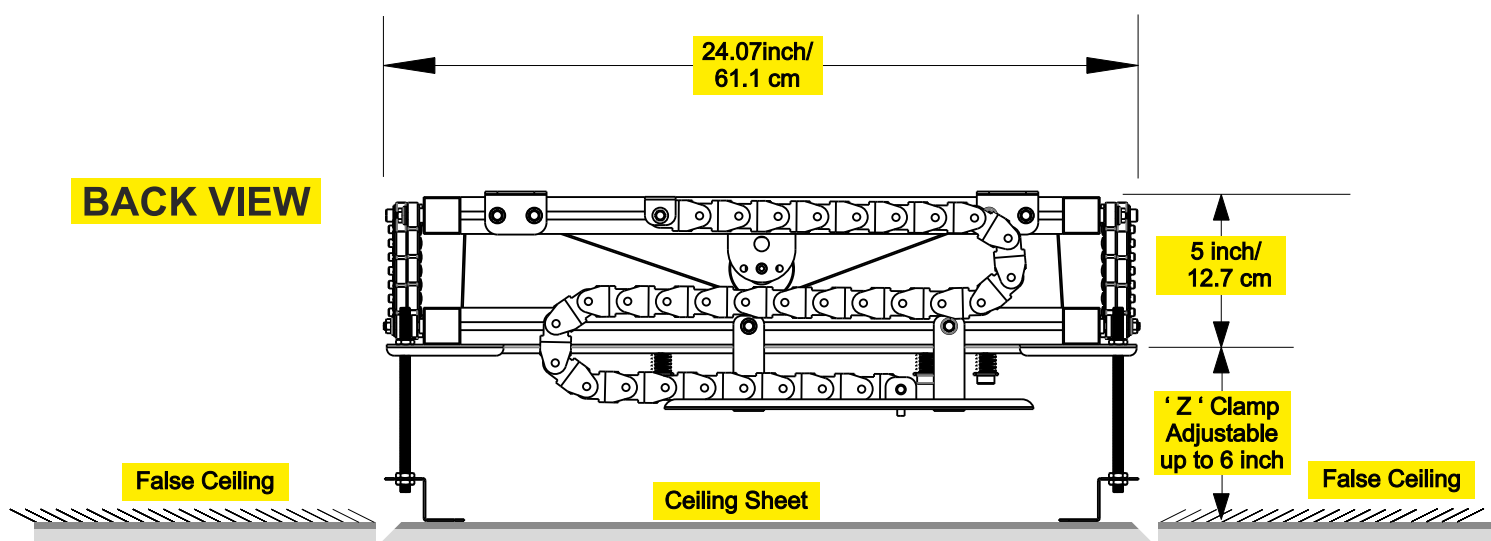
1 Meter Drop

Model No. AX201

SIDE VIEW



BACK VIEW



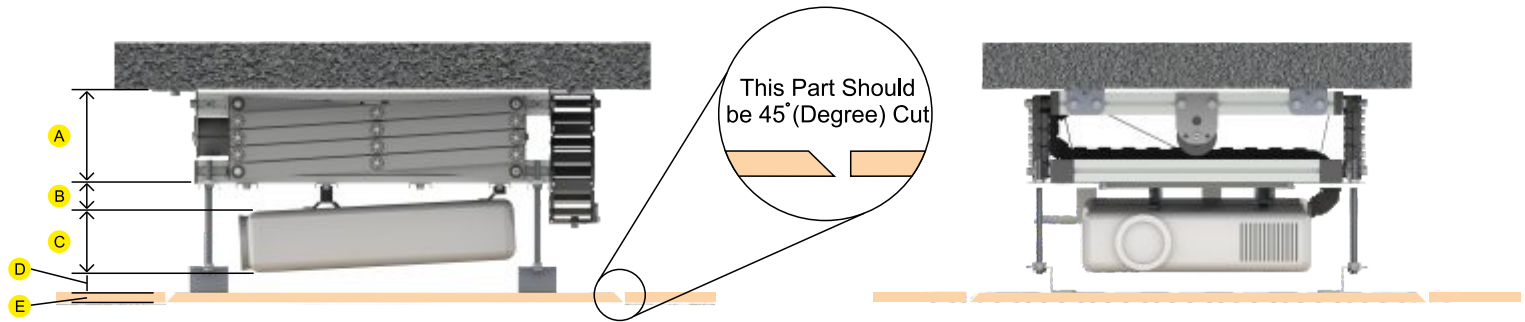
Note : Ceiling Sheet is not included in lift

Projector Lift

Projector Lift Installation (Page - 1)

How to calculate Gap between RCC Ceiling to False Ceiling.

For Fixed Lens Projector



A = Lift Height

B = Projector Tilting Space

C = Projector Height

D = Gap Between Projector to Bottom Sheet

E = Bottom Sheet thickness

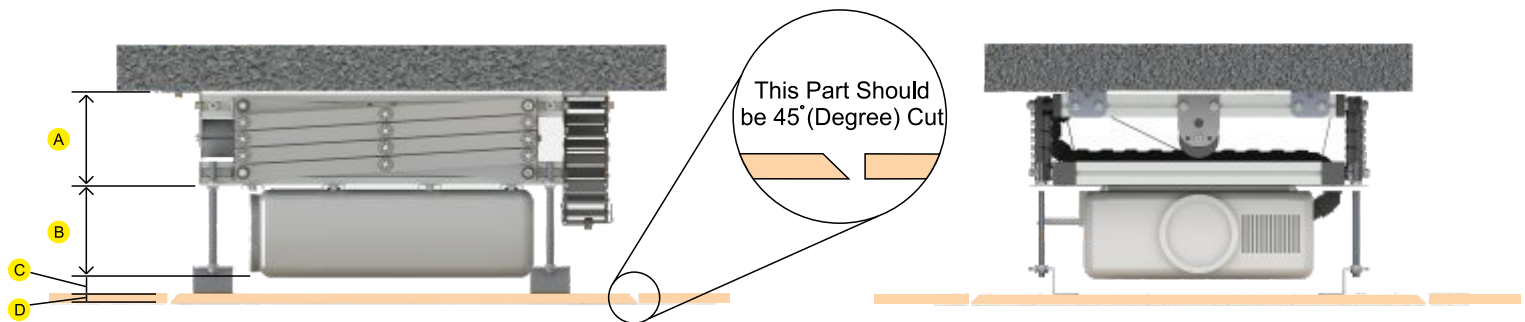
$$A (\underline{5}^{\circ}) \text{ Inch} + B (\underline{\quad}^*) \text{ Inch} + C (\underline{\quad}) \text{ Inch} + D (\underline{\quad}^{\#}) \text{ Inch} + E (\underline{\quad}) \text{ Inch} = (\underline{\quad}) \text{ inch}$$

● = AX201 Height

* = Approx 1 to 1.5 inch

= Approx 0.5 to 1 inch

For Lens Shifting Projector



A = Lift Height

B = Projector Height

C = Space

D = Bottom Sheet thickness

$$A (\underline{5}^{\circ}) \text{ Inch} + B (\underline{\quad}) \text{ Inch} + C (\underline{\quad}^*) \text{ Inch} + D (\underline{\quad}^{\#}) \text{ Inch} = (\underline{\quad}) \text{ inch}$$

● = AX201 Height

* = Approx 1 to 1.5 inch

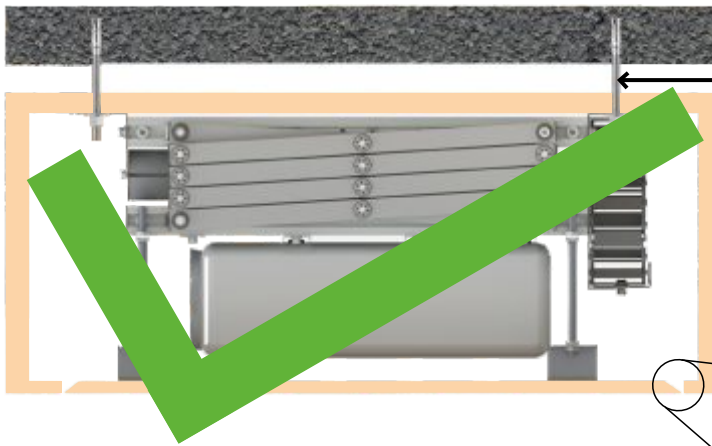
= Approx 0.5 to 1 inch

Projector Lift

Projector Lift Installation (Page - 2)

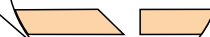
If you are Installing Lift in Wooden Box Please Look into this Drawing

RCC Ceiling



Fix Full thread Stud to RCC and fix Projector Lift with it.

This Part Should be 45 (Degree) Cut



RCC Ceiling



Projector Lift Fixed by wooden Screw.

This Part Should be 45 (Degree) Cut



It Cause High Noise

Projector Lift

Projector Lift Installation (Page - 3)

If not use Cable chain it cause Damage Lift by cable mess, in this case we will not Support any Warranty.



For better cable management must use cable chain

For Model AX201 Bottom Sheet Cutout Minimum size 28 inch x 28 inch ideal size 30 inch x 30 inch

